



Apt 3 Punch Bowl Apartments, 83 Chapel Street, Salford, M3 5DF

Live in exclusivity. Be part of owning one of only four apartments on Chapel St, Salford. This former licensed premises was converted into luxury properties in 2019 and this one bedroom top floor apartment is stunning. From the high end fixtures and fittings, down to the fine detailed light switches, no expense was spared. Communal entrance with staircase to the second floor, entrance hallway with electronic video entry pad and alarm. The Living/kitchen offers exposed brickwork, double glazed sash windows and a beautiful fitted kitchen with island, appliances and quartz worktops. Large double bedroom with fitted wardrobes and heating system. Luxury bathroom with underfloor heating, rain shower and fully tiled walls and floor. Council Tax band A

Offers In The Region Of £245,000

Viewing arrangements

Viewing strictly by appointment through the agent

245 Deansgate, Manchester, M3 4EN 0161 833 9499 opt 3

Communal Entrance

Staircase leading to 1st & 2nd floors

Entrance Hall

Laminate flooring, radiator, video entry system and access to all rooms.

Living/Kitchen Room

18'0" x 14'11"

A beautiful room with twin sash windows, exposed feature brick chimney breast and laminate flooring. The standout feature is the fitted kitchen with breakfast island which houses the oven, hob and extractor hood, quartz worktops and seating for two. Matching kitchen units with one and half bowl sink unit, fridge/freezer, dishwasher and washer, ample power points and wall mounted aerial point. Radiator.

Bedroom

11'3" x 11'2"

Double glazed window, radiator and ample power points. Built in wardrobes, separate cupboard housing hot water system. Decorative picture rail.

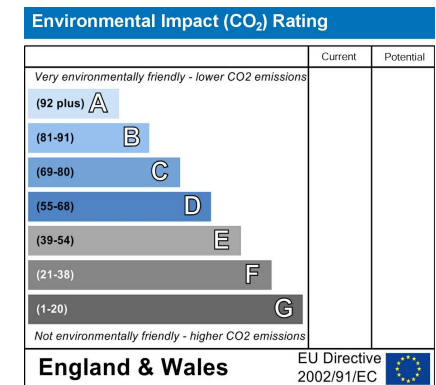
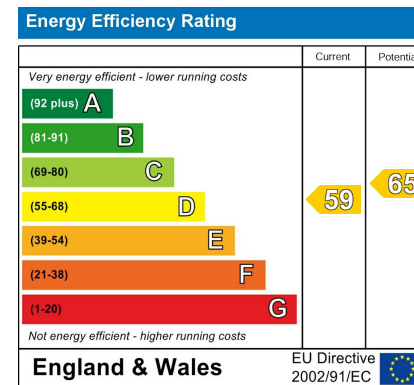
Bathroom

7'2" x 6'10"

This luxury bathroom suite has a rain shower and hand held shower attached, built in sink unit with illuminated mirror above. w.c . tiled floor and walls with underfloor heating, chrome heated towel rail.

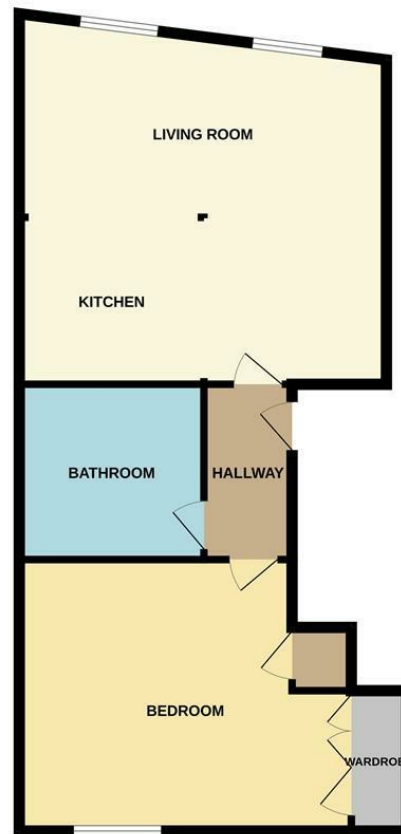
Additional Information

Service Charge £1632 pa
Lease 150 Years from 2018
Ground Rent £150pa. Doubles every 25Years





GROUND FLOOR



Measurements are approximate. Not to scale. Illustrative purposes only.
Made with Metropix ©2023



These particulars are believed to be accurate but they are not guaranteed and do not form a contract. Neither Jordan Fishwick nor the vendor or lessor accept any responsibility in respect of these particulars, which are not intended to be statements or representations of fact and any intending purchaser or lessee must satisfy himself by inspection or otherwise as to the correctness of each of the statements contained in these particulars. Any floorplans on this brochure are for illustrative purposes only and are not necessarily to scale.

Offices at: Chorlton, Didsbury, Disley, Hale, Glossop, Macclesfield, Manchester Deansgate, Manchester Whitworth Street, New Mills, Sale, Wilmslow and Withington

245 Deansgate, Manchester, M3 4EN

0161 833 9499 opt 3

manchester@jordanfishwick.co.uk

www.jordanfishwick.co.uk

